

## Product Specification Sheet

**FC2-S**

**Fire Curtain with Smoke Seal and up to 4-hour Fire Resistance Approval to British and European Standards**

### KEY SPECIFICATIONS

Headbox	1.2mm galvanized mild steel with 2mm end caps
Rollers	76mm coated mild steel tube
Motors	24V DC, 3100 RPM
Fabric	C41000WK
Bottom Bar	20mm x 20mm - 20mm x 40mm mild steel
Side Guides	100 x 50 rolled steel
Electronics	See separate spec sheet



Smoke Seals are intumescent brushes located within the headbox and side guides to ensure smoke leakage does not exceed 3m<sup>3</sup>/m/hr at a pressure of 25Pa.

### STANDARDS

Tested and approved to British and European Standards.

- BS EN 1634 - Part 1 : Fire resistance test for door and shutter assemblies and openable windows.
- BS EN 1634 - Part 3 : Smoke control test for door and shutter assemblies.

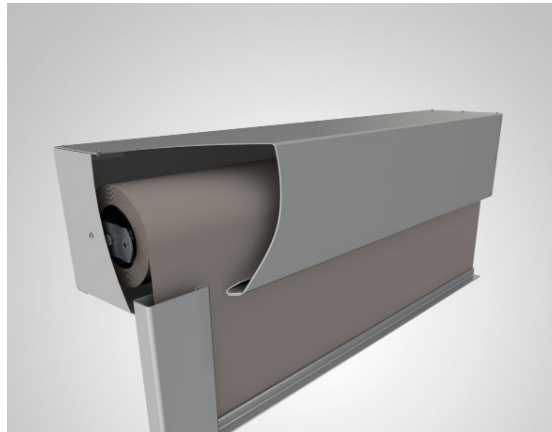
### DESIGNATIONS & SIZE LIMITATIONS

Model	Max Width (m)	Max Drop (m)	Fire Resistance (mins)		Product Standard	Certificate / Reports
			Integrity (E)	Irradiance (W)		
Single Roller	5.0	6.0	180	30	BSEN 1634-1 BSEN 1634-3	WF360780 WF418934 WF412812 WYC410889
		5.0	240	30		

## HEADBOX SIZES

The size of the curtain roller housing (headbox), depends on the curtain drop and width. The tables below give details of the full range of standard headbox sizes for FC2-S fire curtains. Contact us for oversized systems.

Type A: The standard headbox for use with curtain widths up to 5m.



		Type A
		Single Roller Headbox (Max Width 5m)
		Roller Width
FC2-S	Curtain Drop	Up to 5.0m
	Up to 3.0m	210x210mm
	3.0m - 6.0m	250x250mm

## WARRANTY

A manufacturer's warranty is provided for a period of one year. Exclusions may apply if any element is sublet to an unauthorised party.

